

Name Tags

Stitch Count

44 wide x 32 high

Approximate design size

3" wide x 2 1/4" high

Stitch Guide:

Cross Stitch:

- o #407 - sportsman flesh dk
- x #931 - antique blue med
- z #754 - peach flesh lt
- ▲ #3051 - grey green dk

Eyelet, Smyrna, or Four Sided:

- ⊗ White - Stitch borders in stitch of your choice

Smyrna Cross:

- #931 - antique blue med

Mosaic Stitch:

- ∥ #931 - antique blue med

Outline Stitch - Vine:

- ┘ #3051 - grey green dk

Lazy Daisy Stitch - Leaves:

- o #3051 - grey green dk

Pat's Flowers Stitch - Flowers:

- ⊕ White or color of your choice
- You may place flowers on the vine randomly

French knots - Buds:

- #931 - antique blue med

Backstitch - hearts:

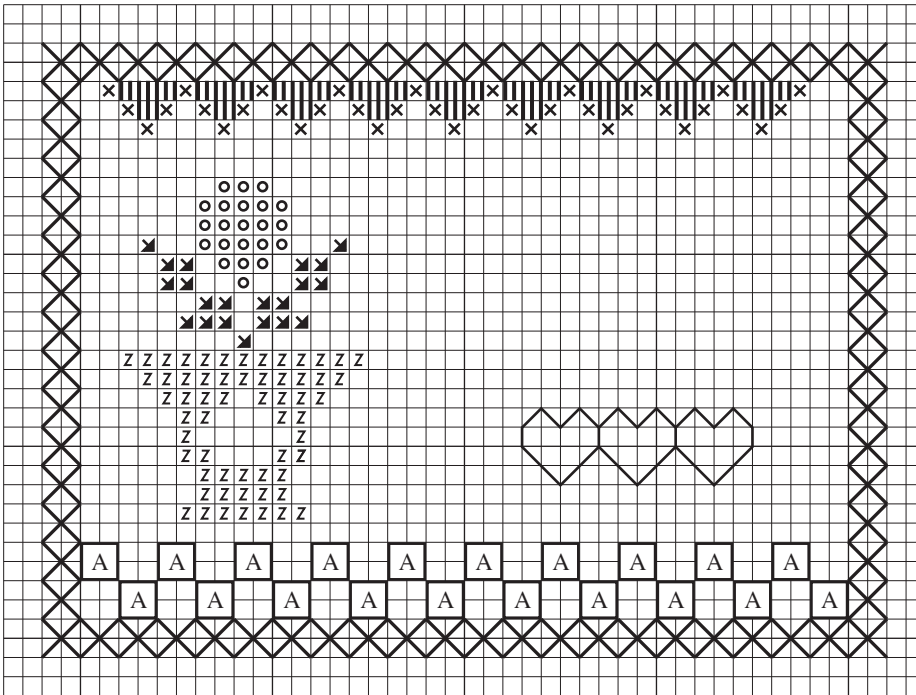
- ♡ #931 - antique blue med

Satin Stitch - hearts, fill saw tooth border:

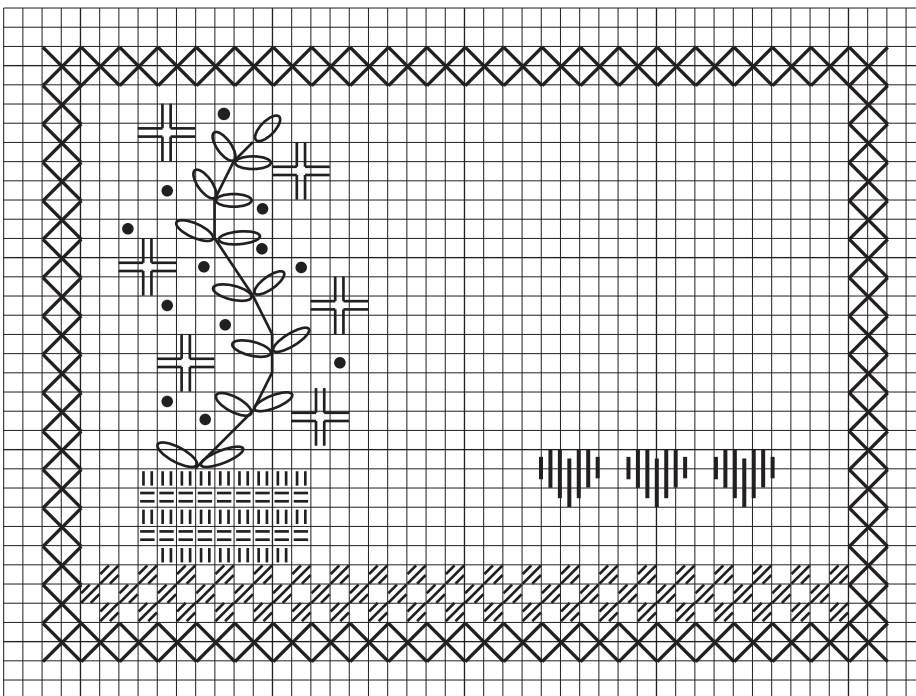
- |||| white

Satin Stitch - basket:

- ▬▬ #677 - old gold vy lt



Nametag Graph #1 - one square equals two threads



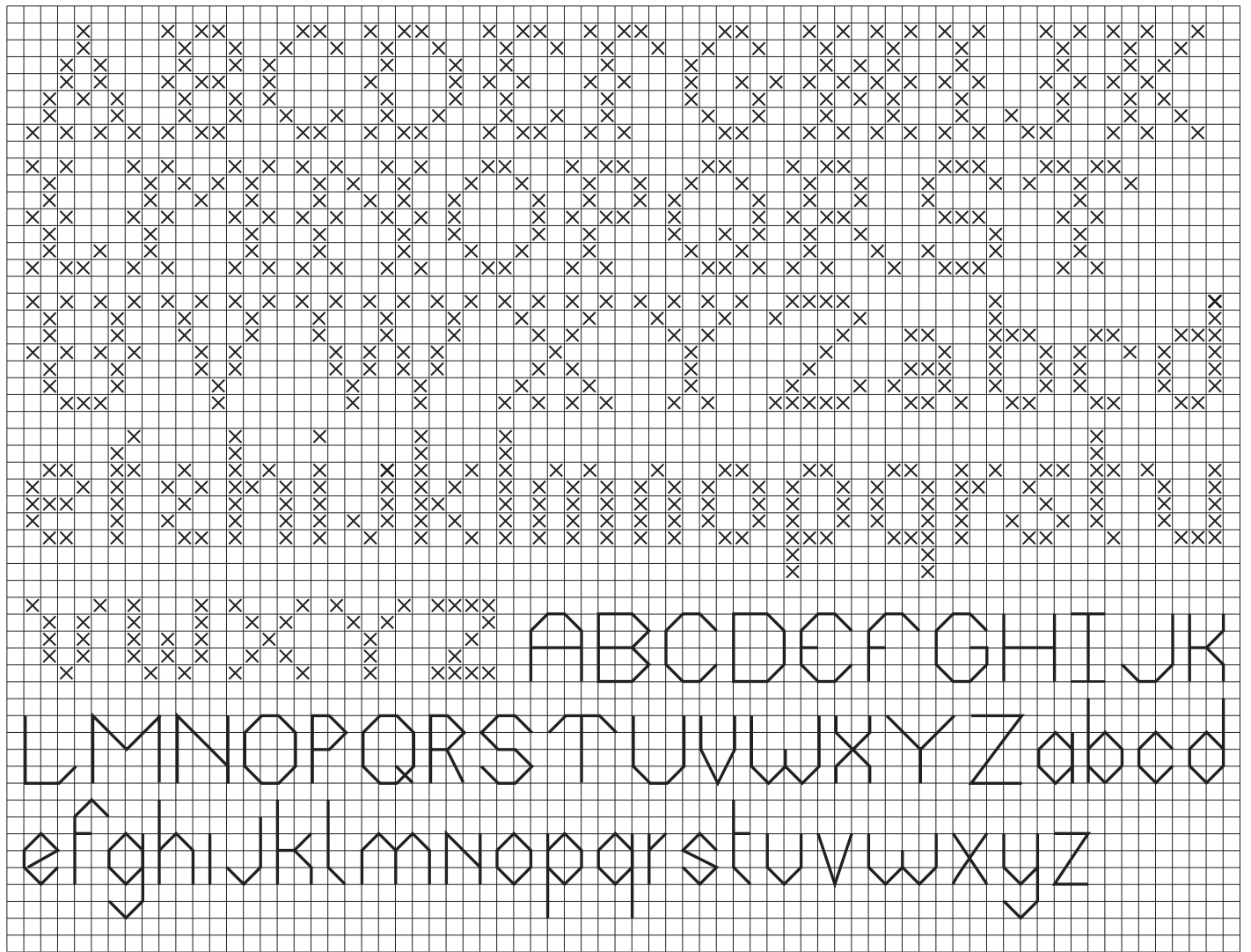
Nametag Graph #2 - one square equals two threads

Materials and supplies:

- 28 count linen in color of your choice
- DMC floss
- #28 tapestry needle
- small hoop if desired

General Instructions:

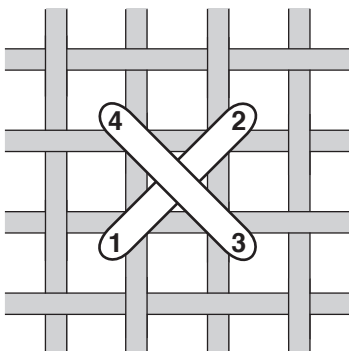
Stitch name tag of your choice using two strands of floss throughout.. Cross stitches are over two linen threads for design elements and over one linen thread for lettering. Refer to stitch diagrams for stitch construction.



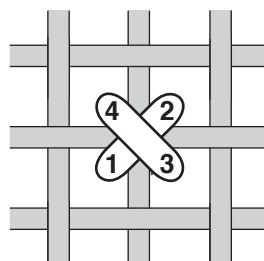
Alphabet graph - one square equals one thread

Finishing Instructions:

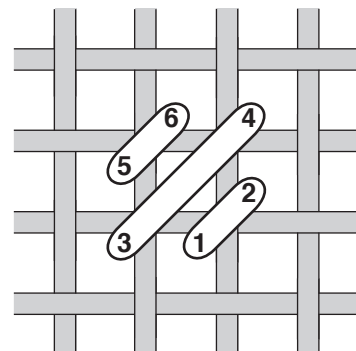
- Stitch name tag of your choice.
- Add your name using the alphabet graphs. If using the cross stitch alphabet, stitch over one. If using the back stitch alphabet, stitch over two.
- Lace the completed stitched piece over an appropriate sized cardboard.
- Make a back using coordinating fabric.
- Sew front and back pieces together.
- Add a cord or pin back.



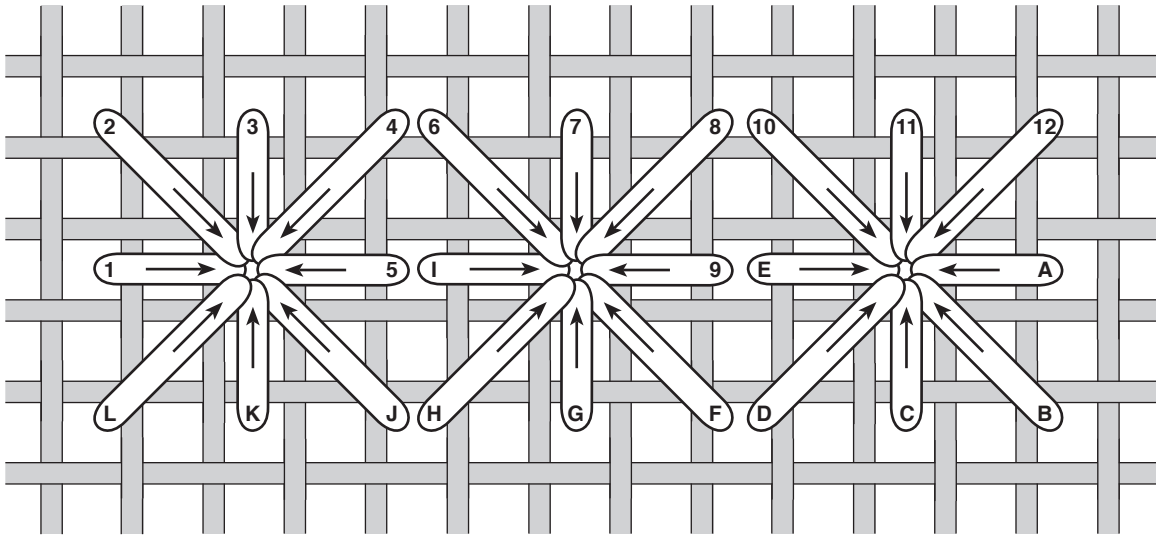
Cross Stitch over 2



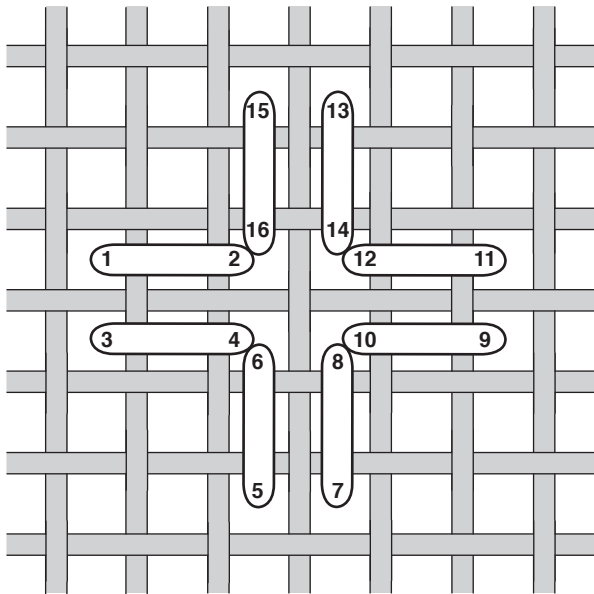
Cross Stitch over 1



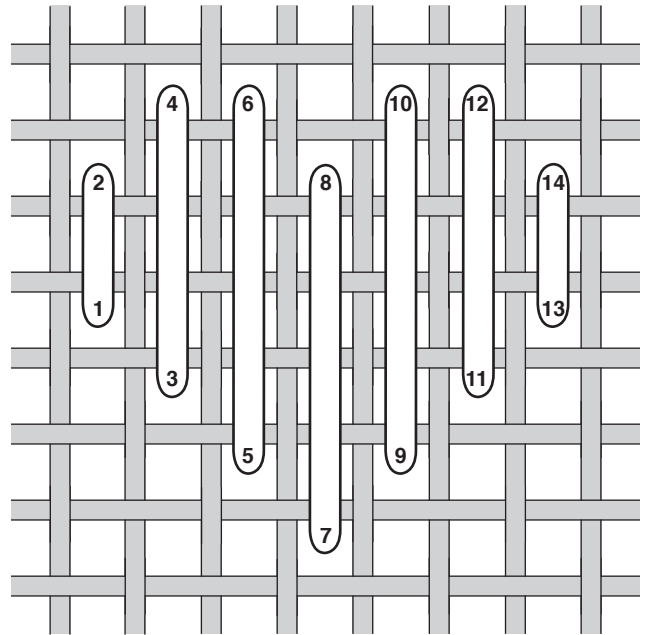
Mosaic Stitch



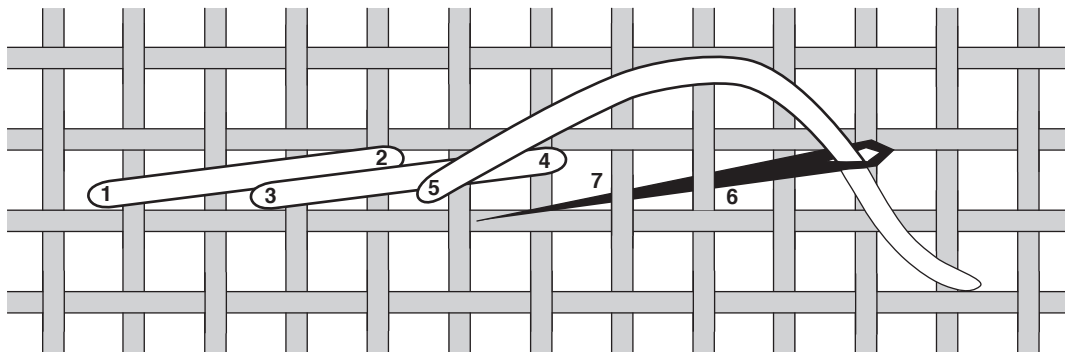
Eylet Border: This stitch is done in two journeys. On first journey bring needle up at numbers and down at center hole as indicated by arrows. On return journey bring needle up at letters and down at center hole. Stitch across one entire row at a time.



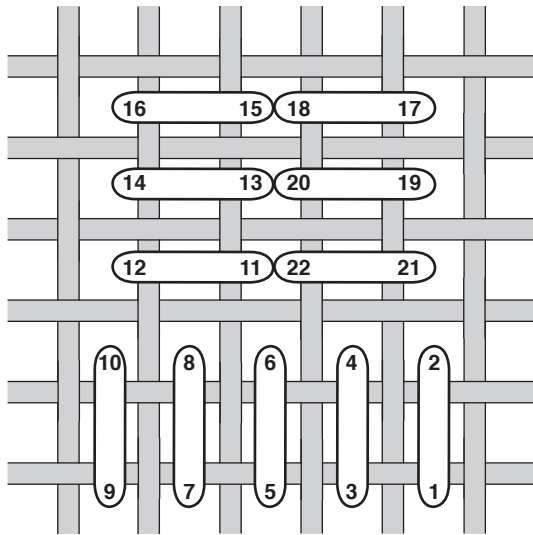
Pat's Flower



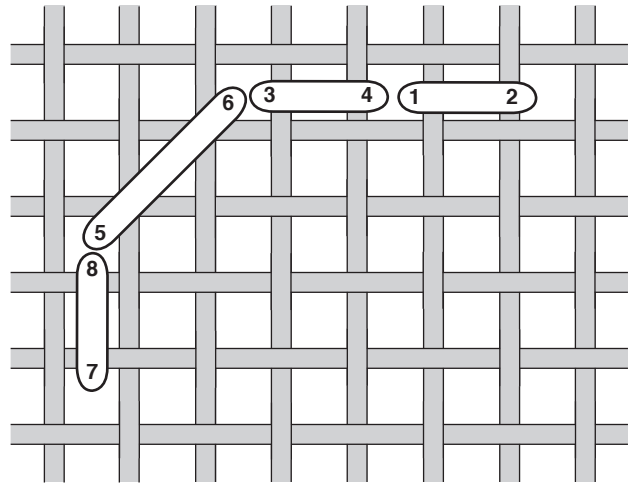
Satin Stitch Heart



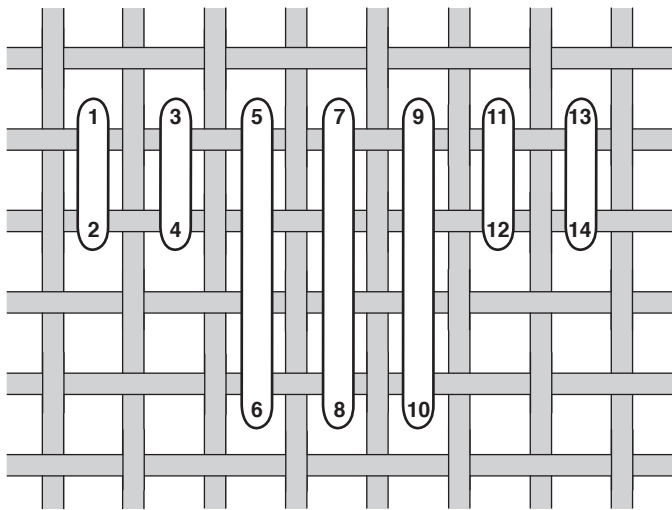
Outline Stitch: Hold thread above needle when picking up the two threads. This stitch may be used to create curves by stitching diagonally.



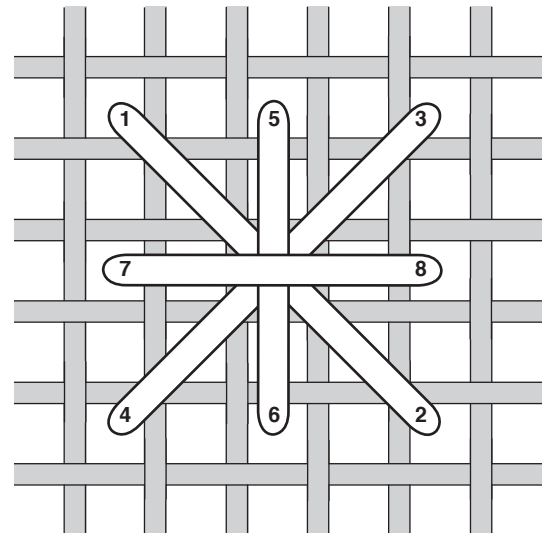
Basket - Satin Stitch: Diagram shows only a small section of basket. Stitch entire rows as shown on graph.



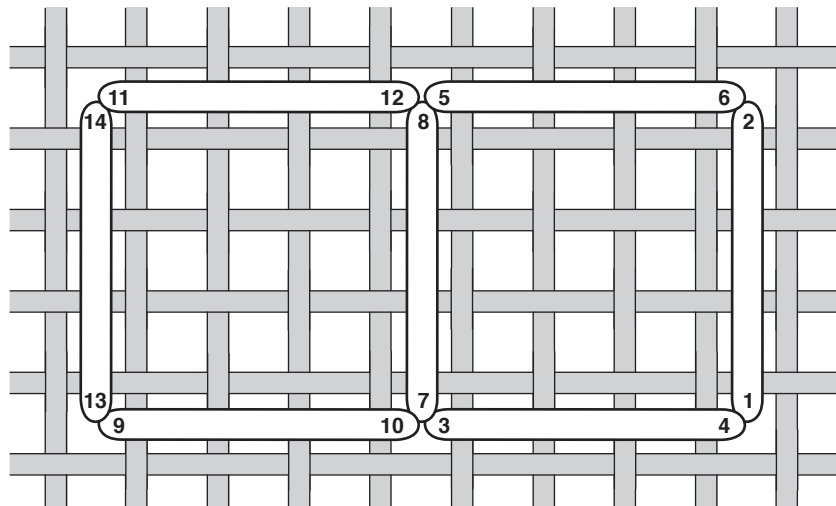
Back Stitch: This stitch is worked right to left. Stitches may be on the straight or the diagonal. Fit stitching to appropriate area on graph.



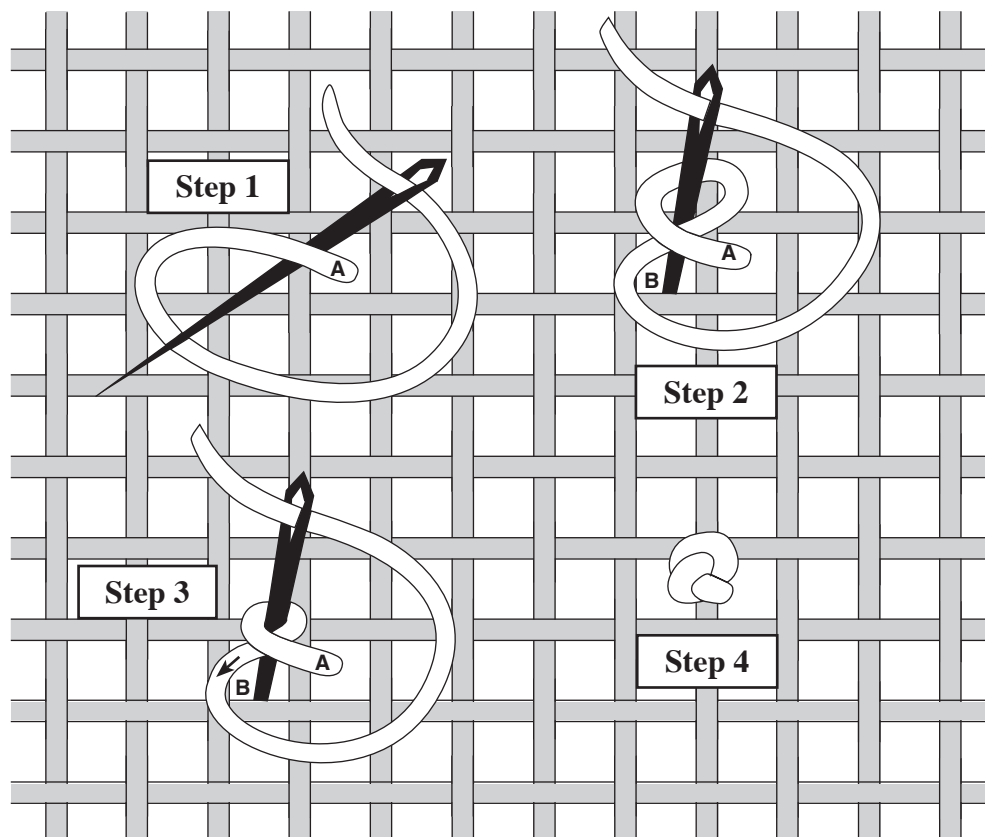
Satin Stitch Filling for Sawtooth border



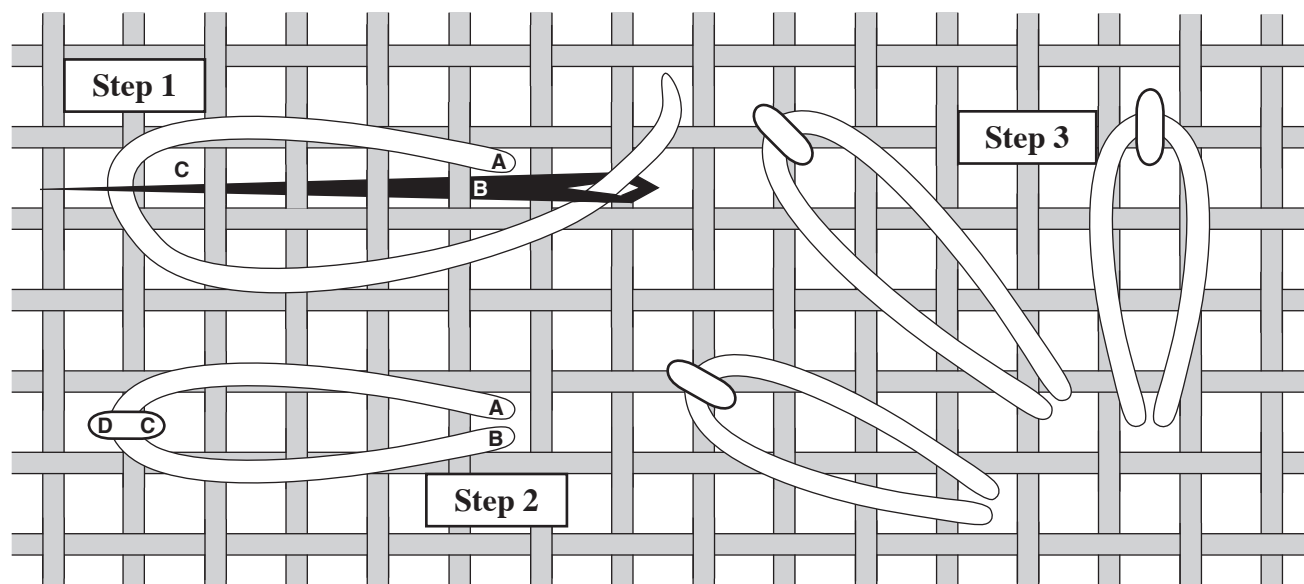
Smyrna Cross



Four Sided Stitch: This stitch creates squares on the front and crosses on the back



French Knot: Step 1 – Bring needle up at A. Wrap thread over needle and then under needle. **Step 2** – Put point of needle down at B. **Step 3** – Tighten loop encircling needle by tugging on thread in the direction of arrow. **Step 4** – Pull thread through to back, tugging gently to tighten knot, being careful not to pull the French knot to back of fabric.



Lazy Daisy: Step 1 – Bring needle up at A, down at B and back up at C. Loop thread around point of needle. **Step 2** – Pull needle through and go down at D. **Step 3** – Completed stitches. Lazy Daisy can be done at any angle. It can be done over two, three or four linen threads.